

Complex 129

2661

3398

2332

3747

3400

3401

3403

3748

2063

*Richardhof*  
14/m 8

3291

8  
7  
6  
5  
4  
3  
2  
1

2263

2177

2178

2189

4488

Groenekruisstraat

4044

4045

4044

3745

3136

3137

4483

Heinhof

4484

3295

4482

3332

4487

2869

2870

2871

2872

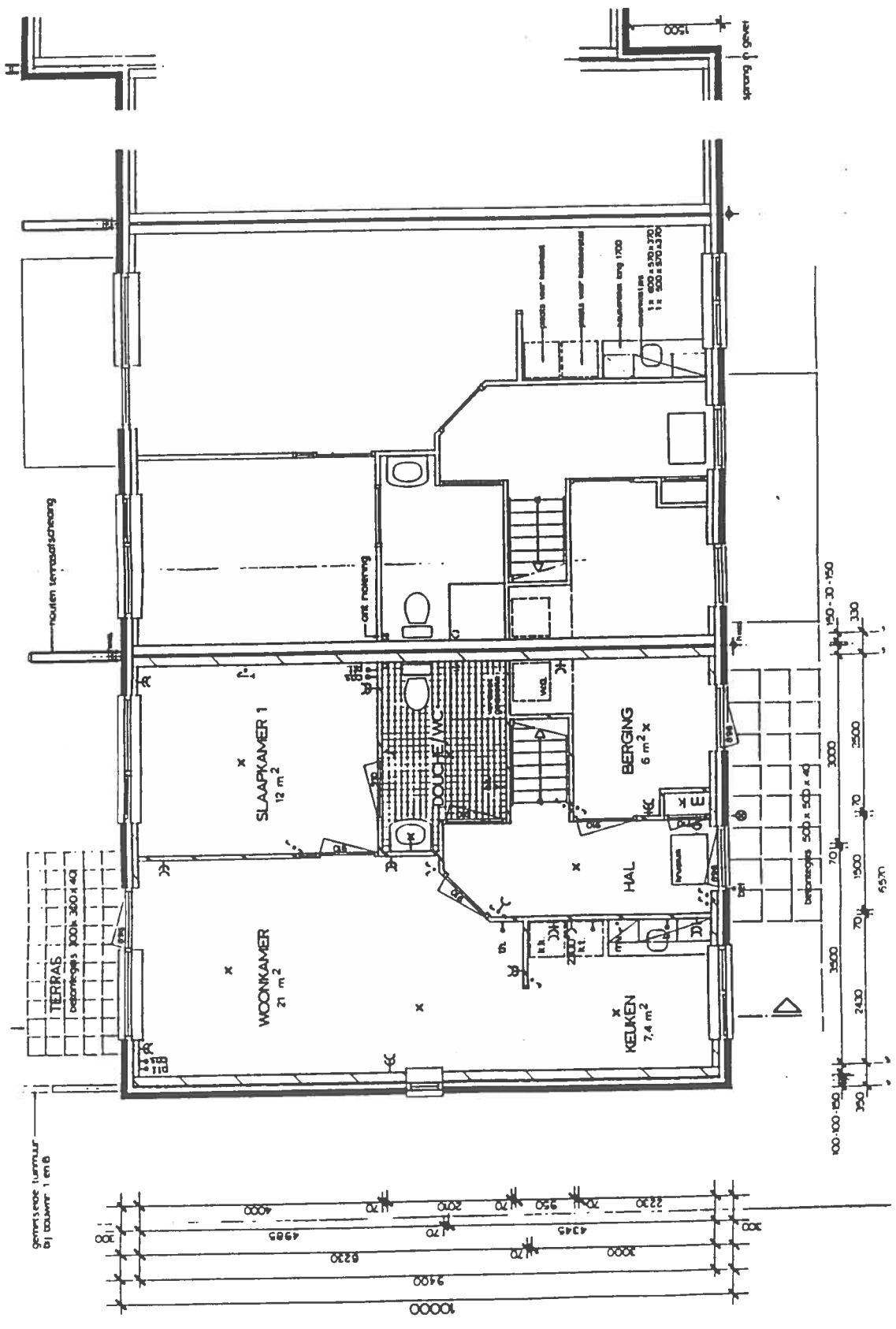
Vlieland

Heinstraat

4485

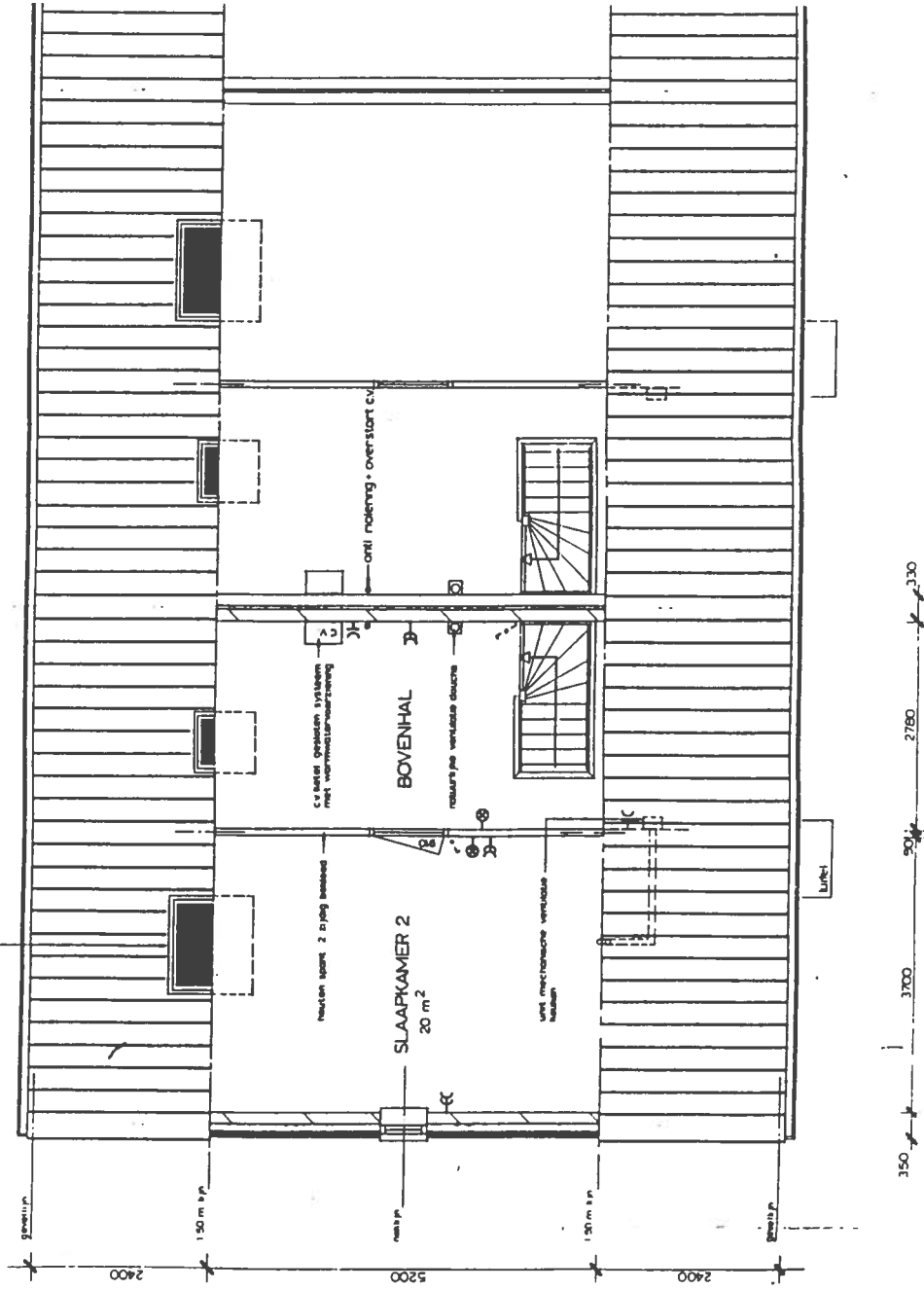
2879

2878

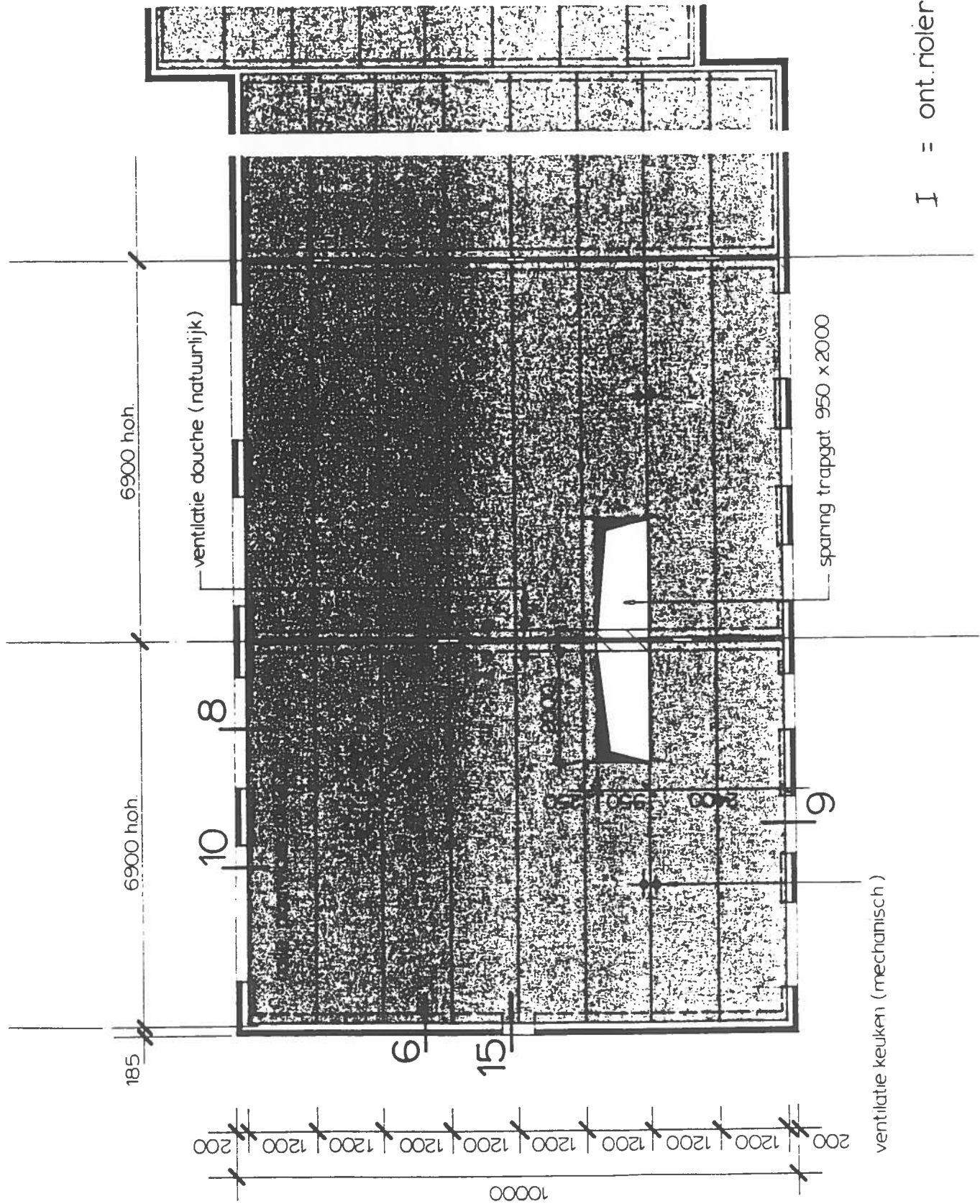


Plattegrond begane grond

Velux dakvenster: GGL 8 afm 1340 x 1400  
 GGL 1 afm 780 x 980

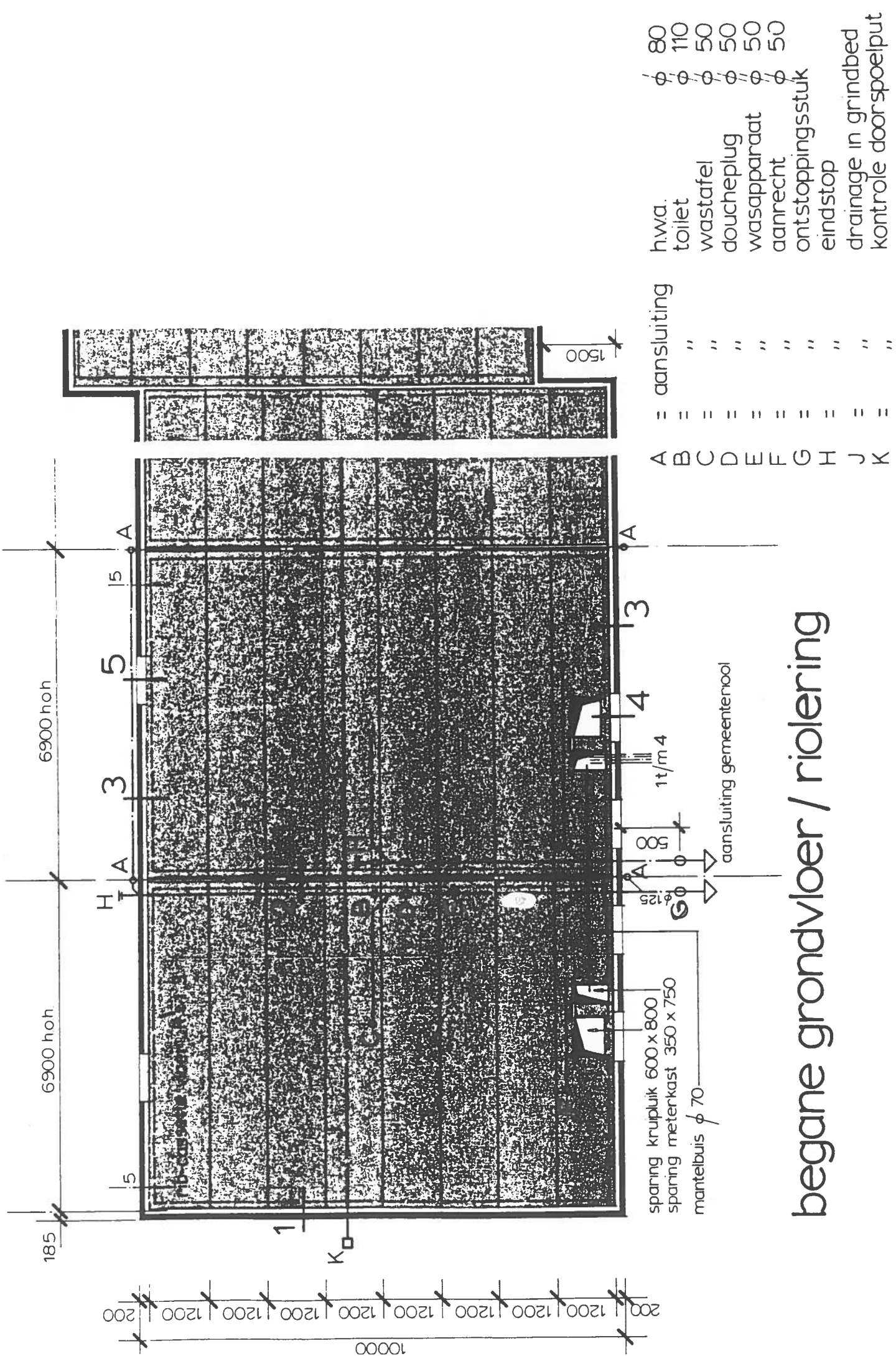


# Plattegrond verdieping



I = ont.niëring overstort c.v.  $\phi$  70

# verdiepingsvloer



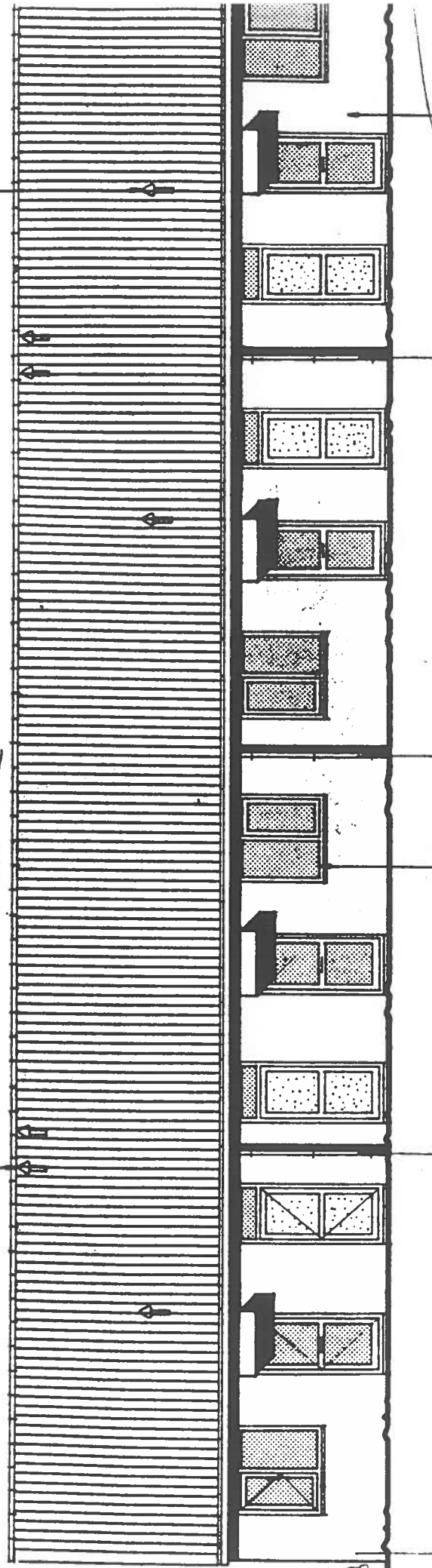
- 80 h.w.a.
- 110 toilet
- 50 wastafel
- 50 doucheplug
- 50 wasapparaat
- 50 aanrecht
- 50 ontstopningsstuk
- 50 eindstop
- drainage in grindbed
- controle doorspoelput
- en of balstuk

A	B	C	D	E	F	G	H	J	K
=	=	=	=	=	=	=	=	=	=
aansluiting	"	"	"	"	"	"	"	"	"

# begane grondvloer / riolering

natuurlijke ventilatie douche

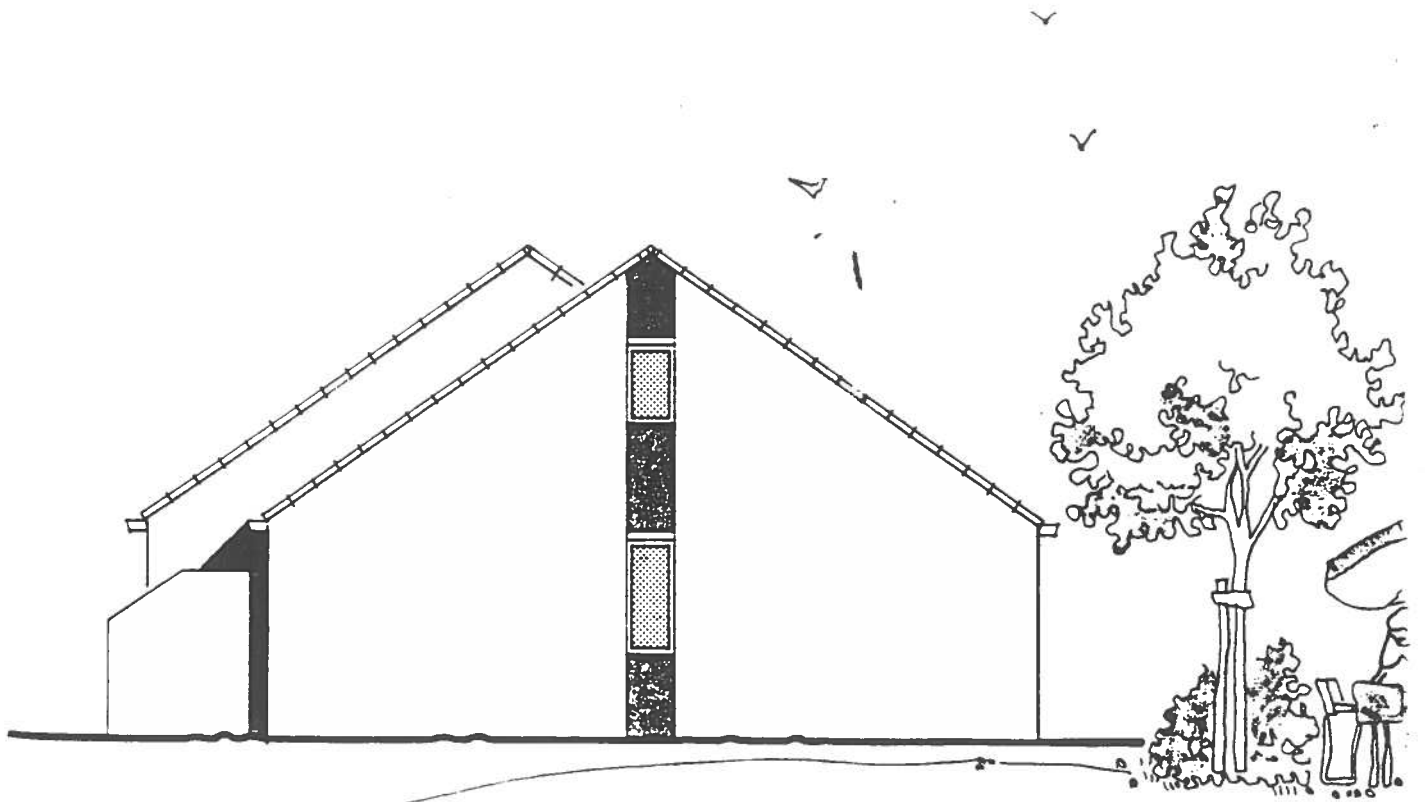
afvoer  
keuken  
m.v.



aluminium kozijnen  
in kleur gemoffeld

gevelsteen schoonwerk  
kleur nader te bepalen

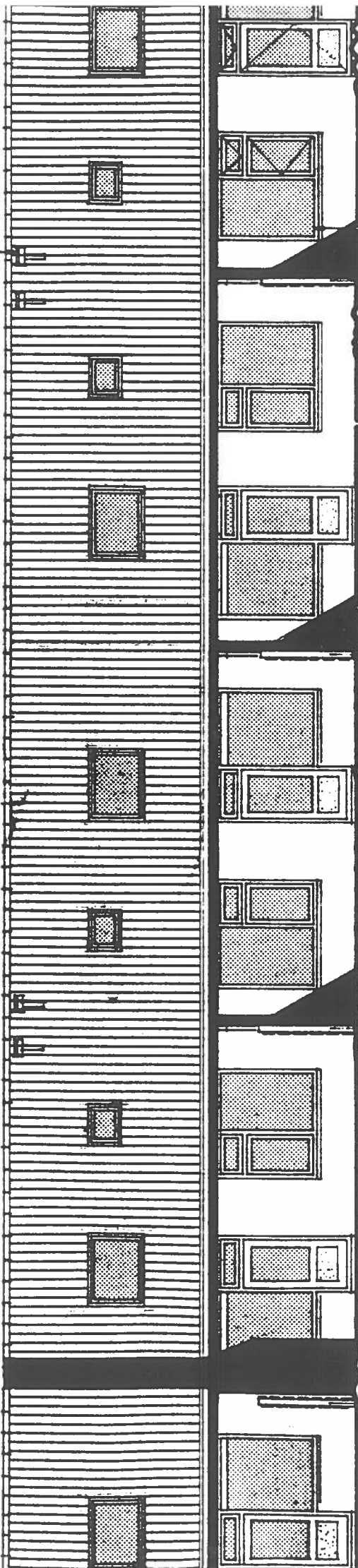
STRAATGEVEL



hooftgevel

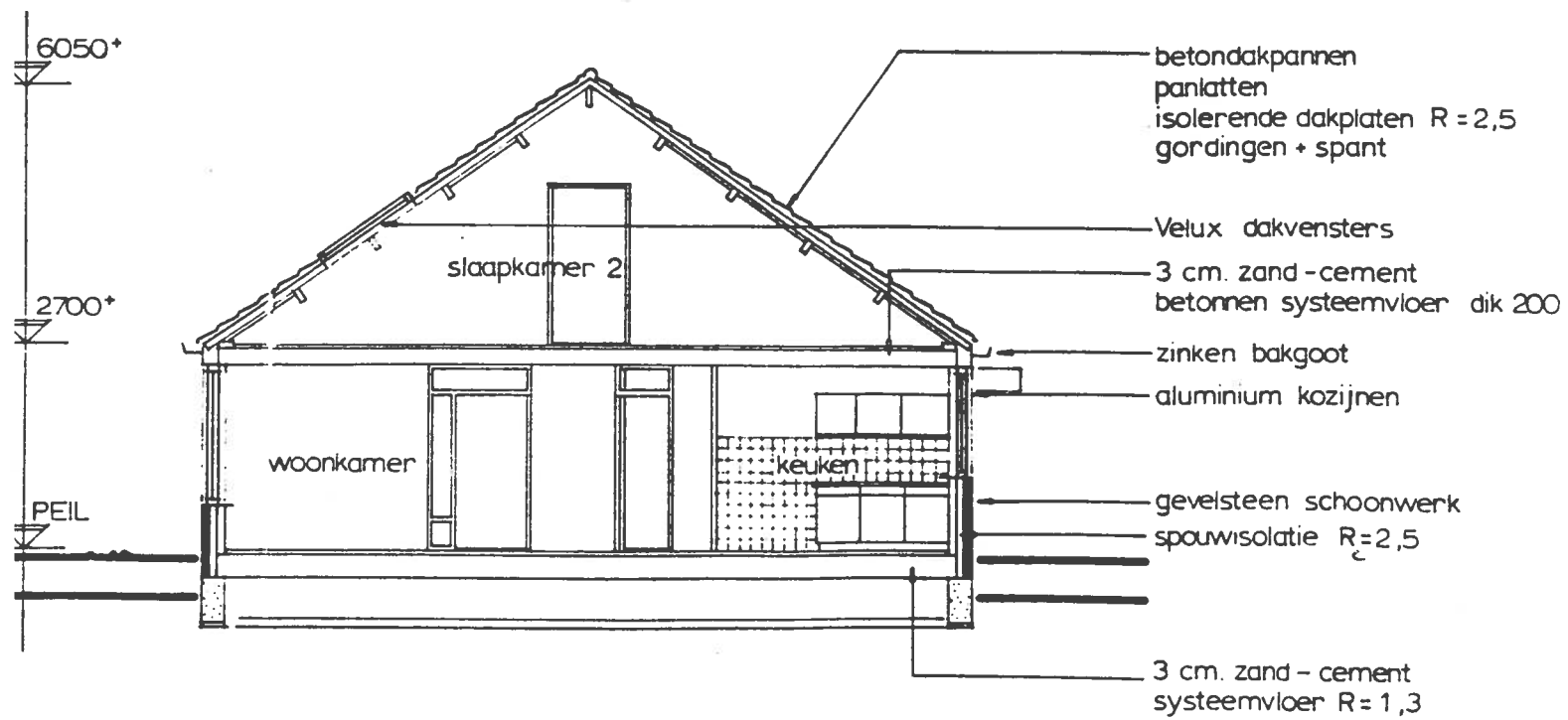
afvoer cv installatie

aluminium kozijnen  
in kleef gemoffeld



Red. A. V. S. J. E. P. P. C. D. D.





doorsnede