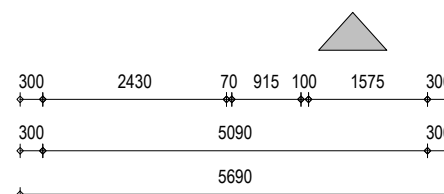
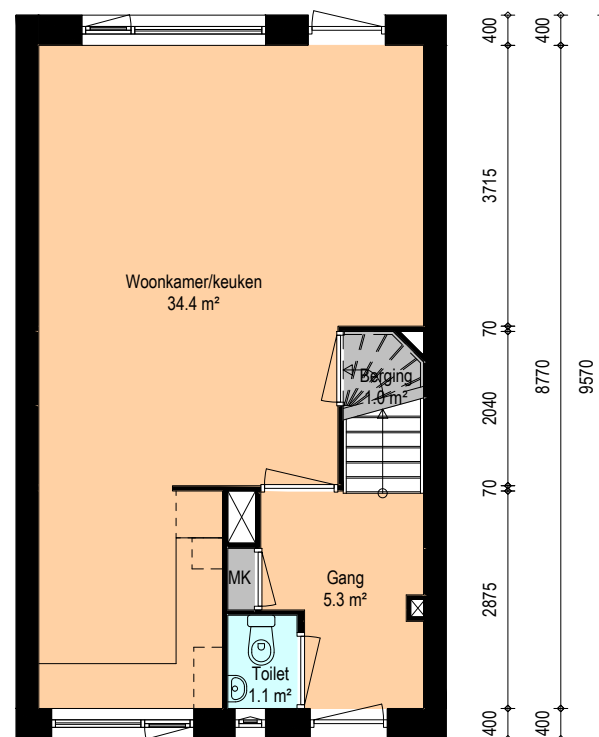
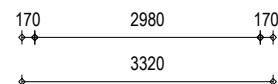
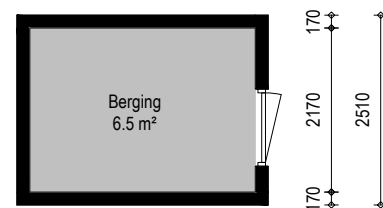


Oppervlakten tbv de WWS Kollet 12

| Ruimte | Oppervlakte(m ²) |
|--------|------------------------------|
|--------|------------------------------|

| | |
|------------------|---------------------------|
| Berging | 6.5 m ² |
| Berging | 1.0 m ² |
| Gang | 5.3 m ² |
| Toilet | 1.1 m ² |
| Woonkamer/keuken | 34.4 m ² |
| Totaal | 48.3 m² |

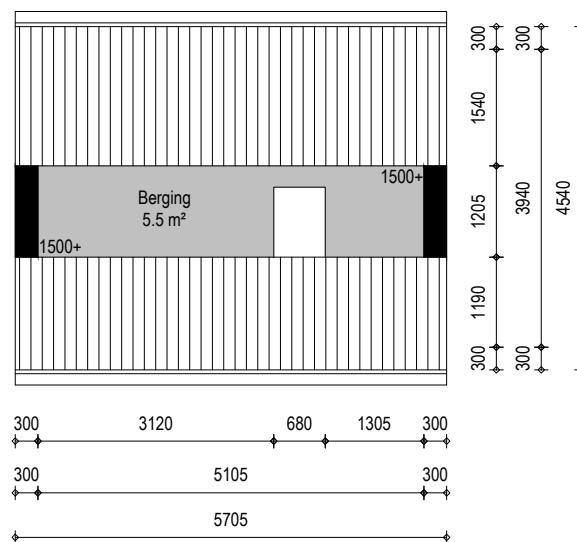
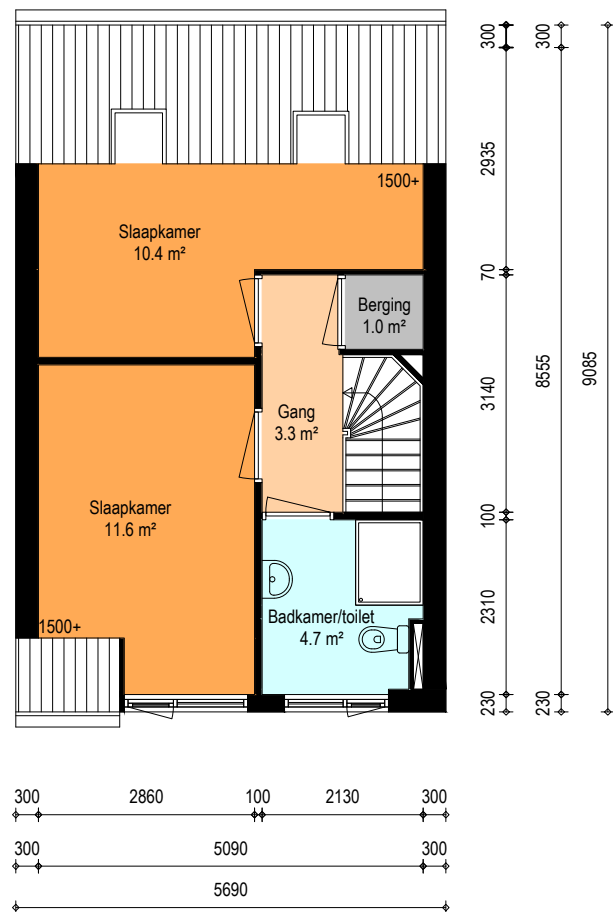


Totale gebruiksoppervlakte (GBO)
Conform de NEN2580 = 51.0 m²



| | |
|----------------|---------------------|
| Adres | Kollet 12 |
| Tekeningnummer | V00(12) |
| Tekeningnaam | Begane grond - nr12 |
| Formaat | A4 |
| Schaal | 1:100 |
| Datum | 05-11-2018 |

Stichting Havensteder
Scheepmakerspassage 1
Postbus 1612
3000 BP Rotterdam



Oppervlakten tbv de WWS Kollet 12

| Ruimte | Oppervlakte(m ²) |
|--------|------------------------------|
|--------|------------------------------|

| | |
|-----------------|---------------------|
| Badkamer/toilet | 4.7 m ² |
| Berging | 5.5 m ² |
| Berging | 1.0 m ² |
| Gang | 3.3 m ² |
| Slaapkamer | 11.6 m ² |
| Slaapkamer | 10.4 m ² |

Totaal 36.6 m²

Totale gebruiksoppervlakte (GBO)
Conform de NEN2580 = 40.3 m²



| | |
|----------------|----------------------|
| Adres | Kollet 12 |
| Tekeningnummer | V01(12) |
| Tekeningnaam | 1e verdieping - nr12 |
| Formaat | A4 |
| Schaal | 1:100 |
| Datum | 05-11-2018 |

Stichting Havensteder
Scheepmakerspassage 1
Postbus 1612
3000 BP Rotterdam